



CXPS

IMAGE EVOLUTION

The CXPS is the first video processor to encompass dual-link DVI matrix routing, image scaling, multi-view windowing, video wall processing, and USB matrix routing in a single 6U device.



**DVI Matrix Router
Seamless Switcher
Video Wall Processor
Video Window Processor**



CXPS

Image Scaling

The CXPS video processor image scaler supports single link and dual link DVI pixel clock rates up to 330MHz. The scaling engine provides seamless switching and smooth zoom and pan capability.

Wall Processing

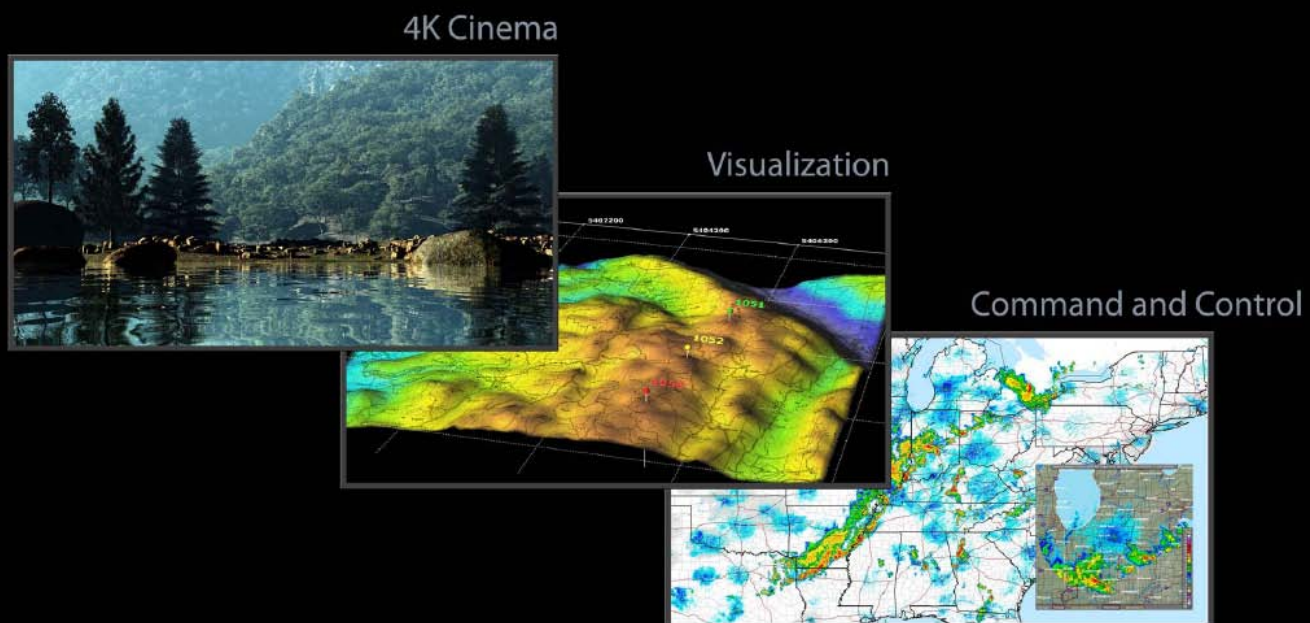
Any input can seamlessly span across all 36 outputs to create a video wall. Outputs can be grouped for multiple wall applications in any variety of geometries.

Special Effects

The CXPS has nine quad layers of special effects processing. Effects include blending, keying, transitions, customized window borders, and backgrounds.

Windowing

The CXPS video processor supports up to 36 windows on a single output. Windows can be individually prioritized, sized, and positioned in real time.



Key Features

- DVI Routing up to 36x36 Single Link DVI
- DVI Routing up to 20x20 Dual Link DVI
- Scaling Output Capable
- Video Wall Mode/Multi-View mode
- Pixel-clocking for Output
- Advanced EDID Management
- RS232 and Ethernet Control

Markets

- Command and Control
- Audio Visual
- Security
- Simulation and Training
- Large Venue
- Education
- Medical Imaging



CXPS

Specifications

CXPS -363x36-SL/DL Frame:

36x36 Single Link DVI.
20x20 Dual Link DVI + 16x16 Single Link DVI
Bandwidth :3.2 Gbps
DVI I/O Configuration: 4x4 to 36x36
EDID Management: Pass Through,
Mirror, Custom Entry
Control : RS232, IP, Java GUI
Options: USB Matrix
Compact 6RU Rack Height
Dimensions: 14"Dx 10.5"Hx 19"W
Power: 1200W Full Load, 90-246VAC,
127-370VDC, 47-63Hz
Weight: 50lbs with shipping container,
38lbs without
Agency: CE,UL,CSA, FCC
RoHS Compliant

CXSP –QDLI Input Card

Quad Input Single/Dual Link DVI
330Mhz Pixel Clock Rate
Input Auto EQ , EDID I2C Acceleration
Input timing Diagnostics
RoHS Compliant
Power: 16.4 Watts

CXSP –QDLO Output Card

Quad Output Single/Dual Link DVI
330Mhz Pixel Clock Rate
True Pixel Regeneration
Clock Conditioning
Output Auto EQ , EDID I2C Acceleration
Output timing Diagnostics
RoHS Compliant
Power: 31.5 Watts

CXSP –QDSLCL Output Scaler Card

Quad Output Single/Dual Link DVI
330Mhz Pixel Clock Rate
Passive or Active Signal Processing
Frame Latency <1.5 Frames
Scaler Modes: Fit , Fill , Center ,Stretch
Zoom Factor: up to 600%
Programmable Dissolve
Windowing: 1-36 Windows
True Pixel Regeneration
Clock Conditioning
Output Auto EQ , EDID I2C Acceleration
Output timing Diagnostics
RoHS Compliant
Power: 38 Watts





Black Diamond Video
1000 Atlantic Ave. #114
Alameda, CA 94501
877-549-6600
www.blackdiamondvideo.com